

# Systems for Offshore & Research Vessels





# Offshore & Research Vessels

Working with the natural forces at sea requires reliable, precise and safe navigation systems. Raytheon Anschütz has many years of experience in providing navigational solutions which meet these demands under all weather and sea conditions.

We provide tailor-made solutions from heading sensors, steering systems and radars up to sophisticated integrated bridge systems for both fore (workstation for navigation) and aft (workstation for shiphandling) console.

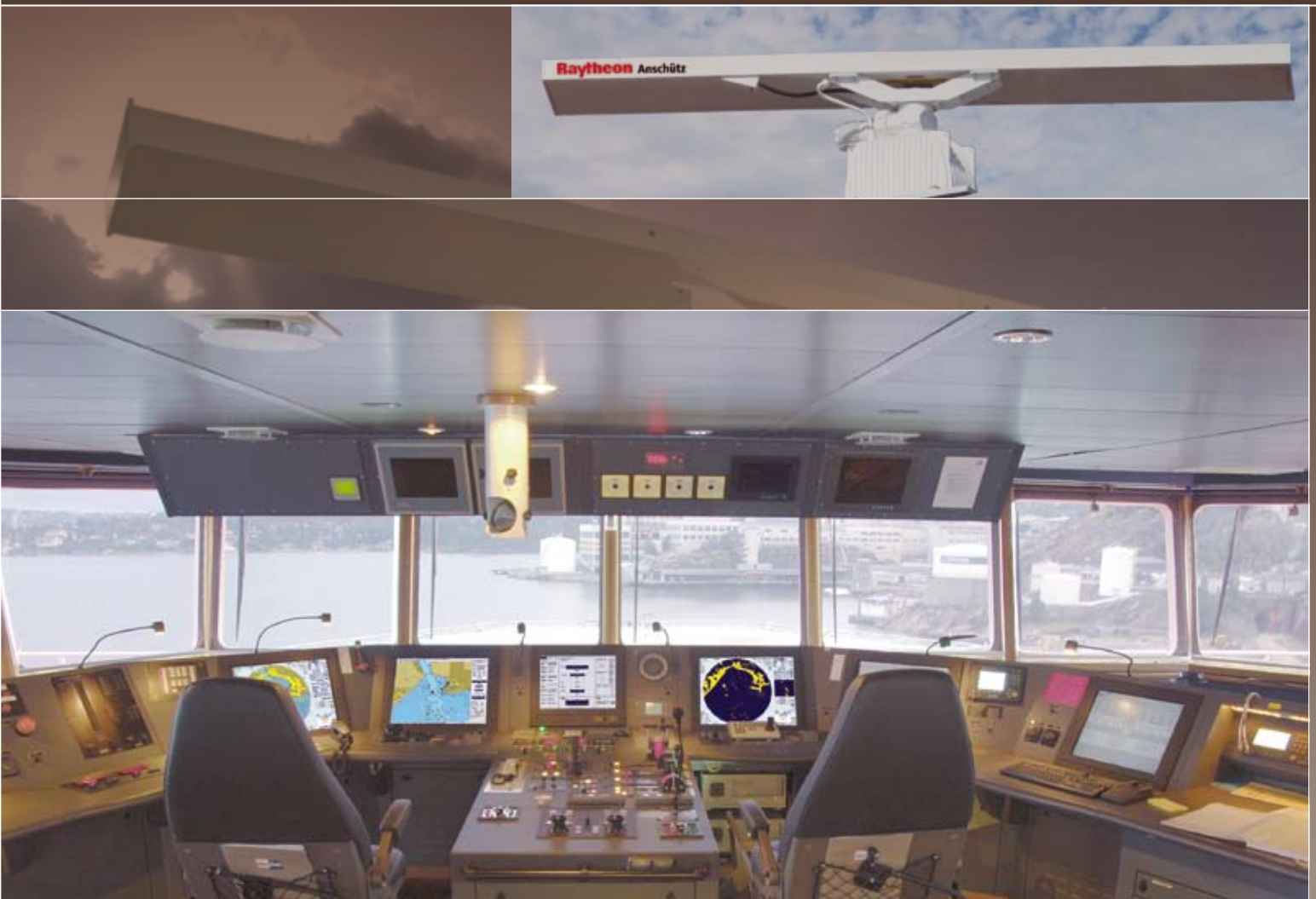
Well known Anschütz equipment packaged in a ruggedized design ensures superior precision, reliability and redundancy even under harsh environmental conditions. Being compliant to DNV NAUT-OSV, our solutions provide maximum safety at sea.

## Benefits

- Personal support and competent project management for individual requirements
- Well-proven reliability, e.g. Anschütz heading sensor and autopilot
- Highest precision according to redundant DP3 navigation system requirements
- DNV NAUT-OSV compliant
- Ruggedized design for safe, reliable operation even under harsh environmental conditions
- Maximum flexibility in upgrading and extending the system with respect to redundancy and safety reasons
- Minimized risk of downtime backed up with a world-wide service network

Precise and safe navigation under all environmental conditions





## Integrated Bridge System

Full multifunctional workstations allow the operator to combine functions of IMO Radars, ECDIS and Central Navigation Data Display at one dedicated position – leading to a maximum flexibility for navigation data access at any place of the Integrated Bridge. Raytheon Anschütz strength is to integrate well-proven equipment into its own system, providing excellence and reliable performance under all conditions. Our multifunctional systems are developed to ensure easy and safe operation, supported through the lifetime of your vessel, keeping a focus on smallest lifecycle cost.

## ARPA Radar/Chart Radar System

Raytheon Anschütz presents one of the most sensitive radars even under rough weather conditions. Brilliant performance goes hand in hand with ease of use and installation.

The clear structure allows the user to concentrate on navigational tasks and provides support concerning collision avoidance.

The NSC chartradar increases the efficiency during watch keeping by displaying charts parallel to the radar image.

## ECDIS

With its Pathfinder®/ST MK2 Raytheon presents a high performance ECDIS which provides the base for paperless navigation and effectively supports the operator in manoeuvring.

Comfortable server functionalities and the interaction with NSC Radar and adaptive autopilot series NP 20X5 makes the Pathfinder®/ST MK2 ECDIS an integral component of Raytheon's bridge concept.

In addition to IHO/IMO compliant vector Electronic Navigation Charts (ENC), the MK2 ECDIS also displays raster charts (ARCS).

## Anschütz Gyro Compass System Standard 22

The Gyro Compass Standard 22 is a modular system that was designed to meet the individual requirements of our customers. The system combines proven technology with most advanced features and highest precision. Due to excellent reliability and long maintenance intervals Standard 22 is a long time secure investment in your ship.

## Satellite Compass Standard 21

It is oriented to geographical north and not affected by the earth magnetic field, latitude and ship's speed. There is no need for compensation of variation and deviation.

The Standard 21 therefore is the perfect satellite compass for all kinds of professional work boats such as fishing or pilot boats and a perfect back-up for a gyro compass system for all merchant vessels.

## Anschütz Autopilots

No matter which Autopilot you choose, Nautopilot® 20X5 series, Pilotstar D or NP 60: Our Autopilots make perfect course- and track keeping possible even at very low or very high speeds.



5000. STD 22, 2008



First STD 22, Bourbon Jade

Bibby Topaz  
Boa Galatea  
Boa Thalassa  
Boa Sub C  
Boa Deep C  
Bourbon Orca  
Bourbon Mistral  
Bourbon Peridot  
Bourbon Emerald  
Bourbon Jade

Far Scimitar  
Far Serenade

Far Superior  
Far Sabre  
Far Sapphire

Geowave Endeavour

Havila Mercury  
Havila Mars

Island Wellserver  
Island Constructor

Island Pioneer  
Island Valiant

Maersk Topper  
Maersk Trader  
Maersk Tackler  
Maersk Tracer

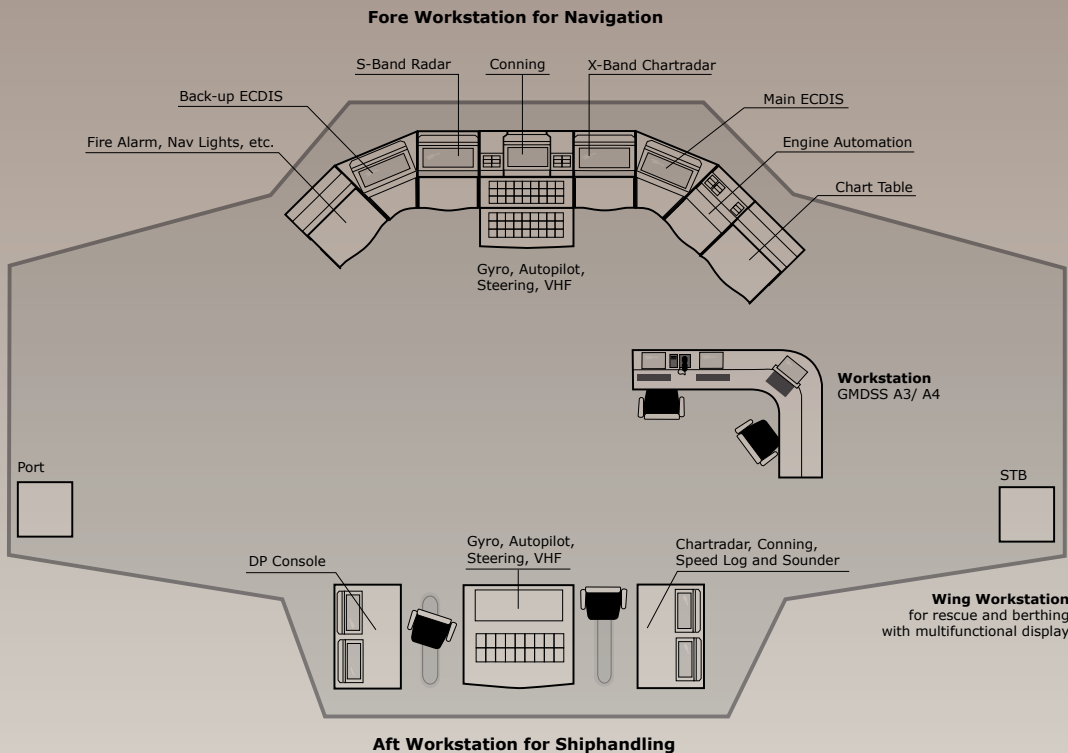
Olympic Zeus  
Olympic Interventor  
Olympic Commander

Rem Mermaid  
Rem Clough  
Rem Commander  
Rem Fortress

Siem Swordfish  
Siem Mollie  
Seven Sisters  
Skandi Mongstad

Troisa Paladin

Volstad Viking



Subject to change due to technical developments without notice.

All rights reserved. Printed in Germany  
RAN 60.009 e / C 0808

**Raytheon Anschütz GmbH**

D-24100 Kiel, Germany

Tel +49(0)4 31-30 19-0

Fax +49(0)4 31-30 19-291

Email sales@raykiel.com

www.raytheon-anschuetz.com